

SUBSOCCER

S7



ASSEMBLY INSTRUCTIONS

WE MAKE BENCH THE BEST PLACE IN SPORTS.

Bench Soccer as a sports is invented by the Finnish company Subsoccer Ltd. Subsoccer is also the leading manufacturer of the games.

Bench soccer is a unique and inclusive variation of soccer designed to be played while seated.

This innovative sport adapts the excitement and strategy of traditional soccer to create an accessible game for people of all abilities, emphasizing inclusivity and participation.

If you want to read this user manual in a language other than English, you can select the language and download the manual by scanning the attached QR code:



Age limit

6+

SUBSOCCER™ products are designed in Finland by Subsoccer Ltd.

SUBSOCCER™ is a trademark of Subsoccer Ltd.

SUBSOCCER™ game is PATENTED.

Made in China.

Copyright © 2025, Subsoccer Ltd.

www.subsoccer.com



@originalsubsoccer

#subsoccer

PRODUCT DESCRIPTION

SUBSOCCER® 7 withstands heavy use. Recommended for indoor use. Two persons are required to assemble the game.

The product is delivered in parts.

Product includes

- Subsoccer 7 (two chairs and one table with mat)
- Official game ball
- Assembly instructions and safety manual
- Needed tools for assembly

NOTE! Ball pump is not included in the package

PRODUCT SIZE			
	Table	Chair	Complete product
LENGTH	1440 mm	460 mm	2340 mm
WIDTH	890 mm	830 mm	890 mm
HEIGHT	750 mm	450 mm	750 mm
WEIGHT	25 kg	12,5 kg	50 kg
THE FLOOR AREA REQUIRED FOR THE GAME			2340 mm × 890 mm

MATERIALS	
FRAME	Powder coated aluminium
TABLETOP	Scratch protected polycarbonate
BRACKETS	Steel
CORNER PIECES, SEATS & RETURN PLATES	High-quality plastics
FABRICS AND NETS	Polyester Polyamide Polypropylene
GAMING MAT	Printed and laminated polycarbonate

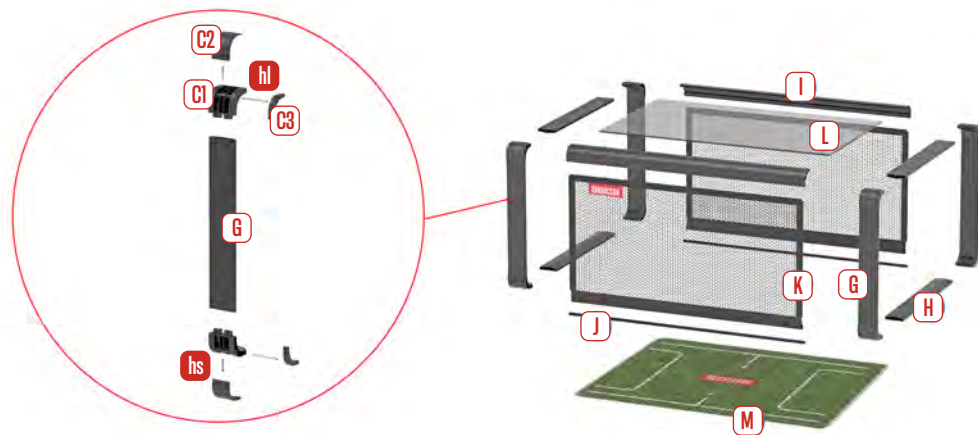
For your maximum durability we suggest you store your Subsoccer 7 inside during rainy weather and at night. Regular cleaning and weather protection are the best ways to extend the life of your product.

Cleaning with a mild detergent solution. Dry with a clean, dry cloth.

PACKAGE 1 TABLE

Part list

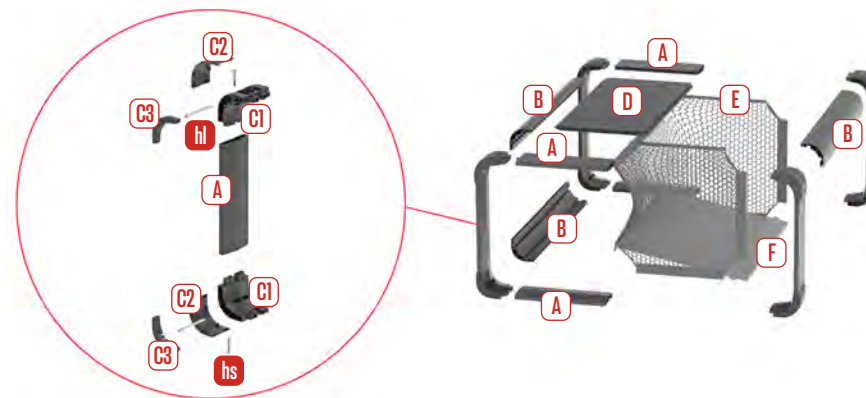
- C1** 8 × Corner piece
 - C2** 8 × Corner cover
 - C3** 8 × Corner cap
 - G** 4 × Aluminum profile straight, 570 mm
 - H** 4 × Aluminum profile straight, 730 mm
 - I** 2 × Aluminum profile curved, 1230 mm
 - J** 2 × Steel pipe
 - K** 2 × Table's side net
 - L** 1 × Transparent table top
 - M** 1 × Gaming mat
 - hs** 16 × Hexagon socket head cap screw, short
 - hl** 8 × Hexagon socket head cap screw, long
- + 1 × Tool: allen key (hand tool)
+ 1 × Tool: allen key (for power drill)
+ Ball



PACKAGE 2 CHAIR × 2

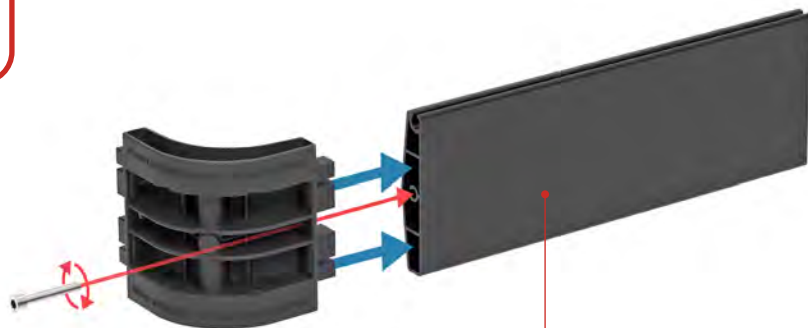
Part list

- A** 16 × Aluminum profile straight, 290 mm
- B** 6 × Aluminum profile curved, 661 mm
- C1** 16 × Corner piece
- C2** 16 × Corner cover
- C3** 16 × Corner cap
- D** 2 × Seat plate
- E** 2 × Chair's net
- F** 2 × Ball returner
- hs** 32 × Hexagon socket head cap screw, short
- hl** 12 × Hexagon socket head cap screw, long



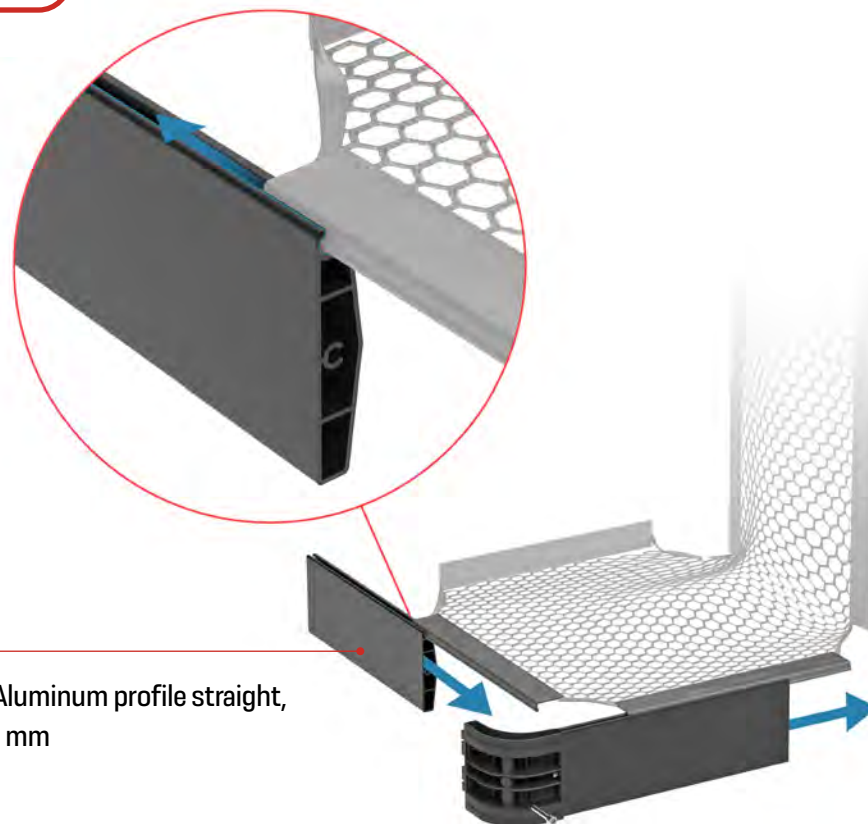
CHAIR × 2

1



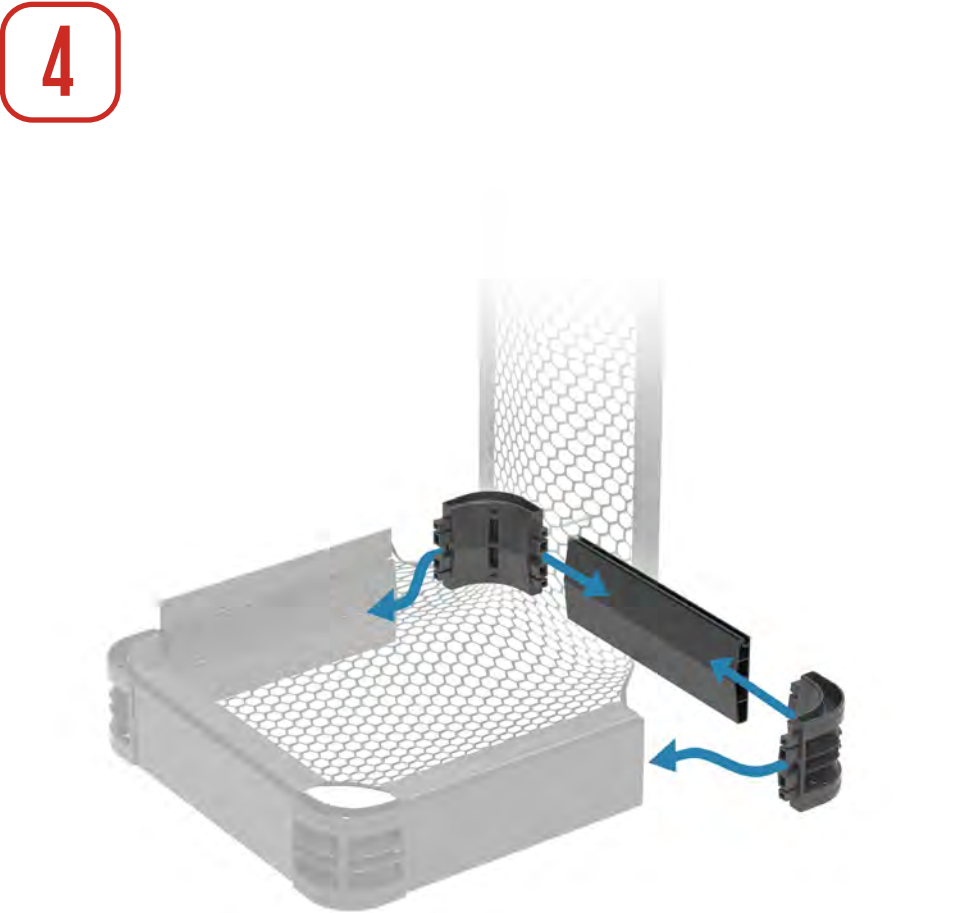
A Aluminum profile straight,
290 mm

2



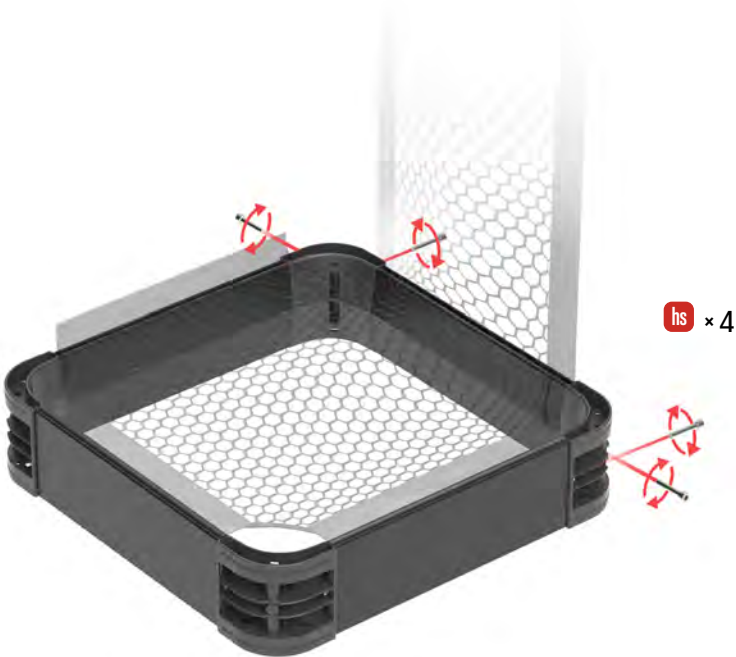
A Aluminum profile straight,
290 mm

CHAIR × 2

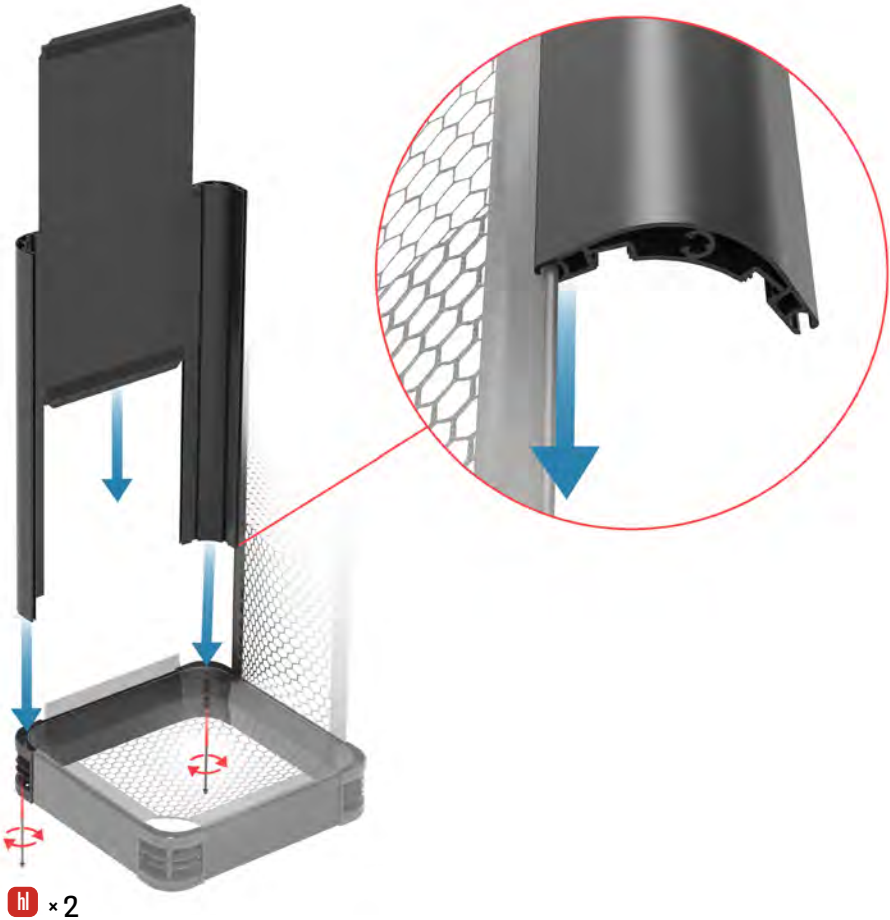


CHAIR × 2

5

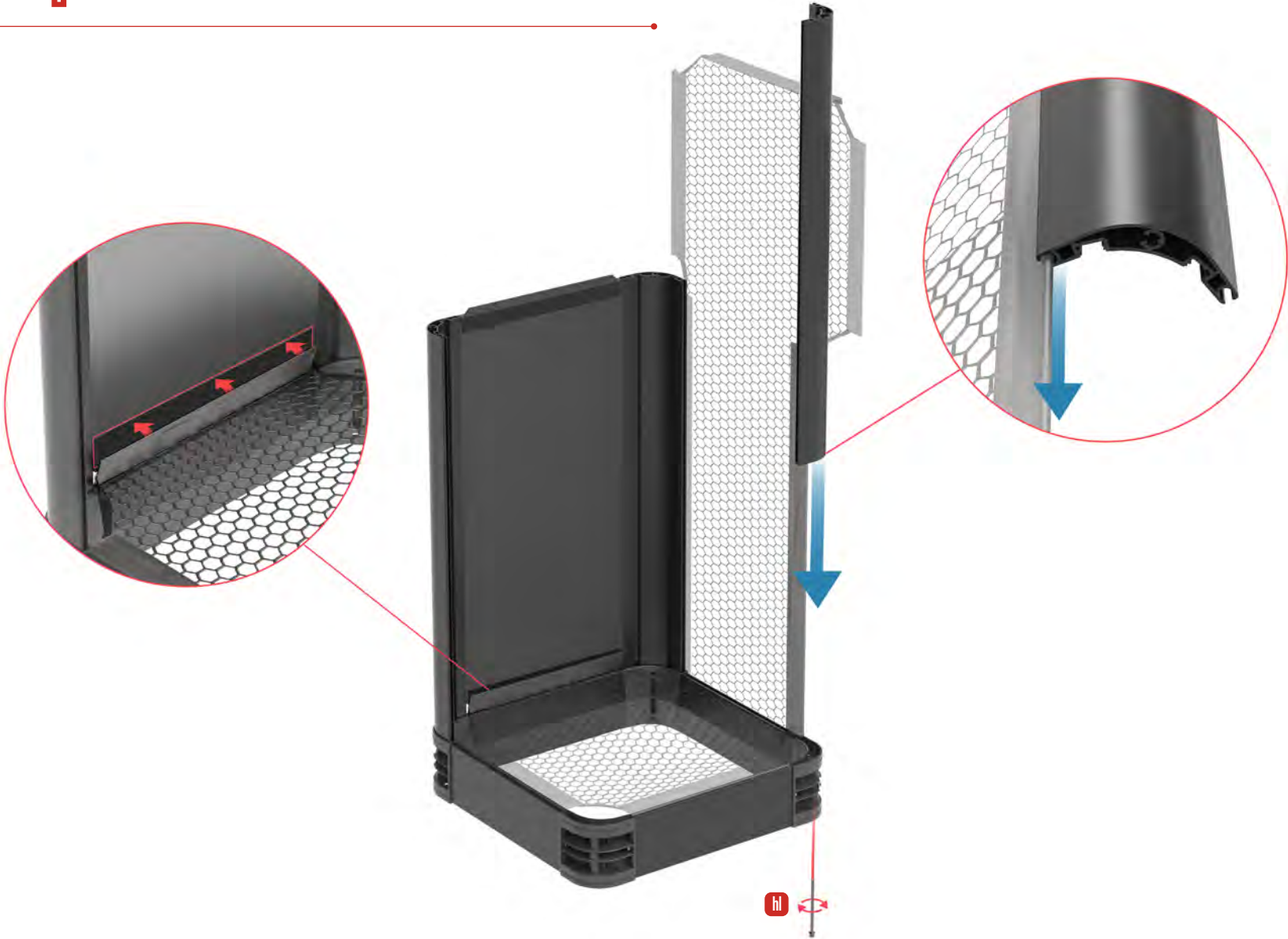


6



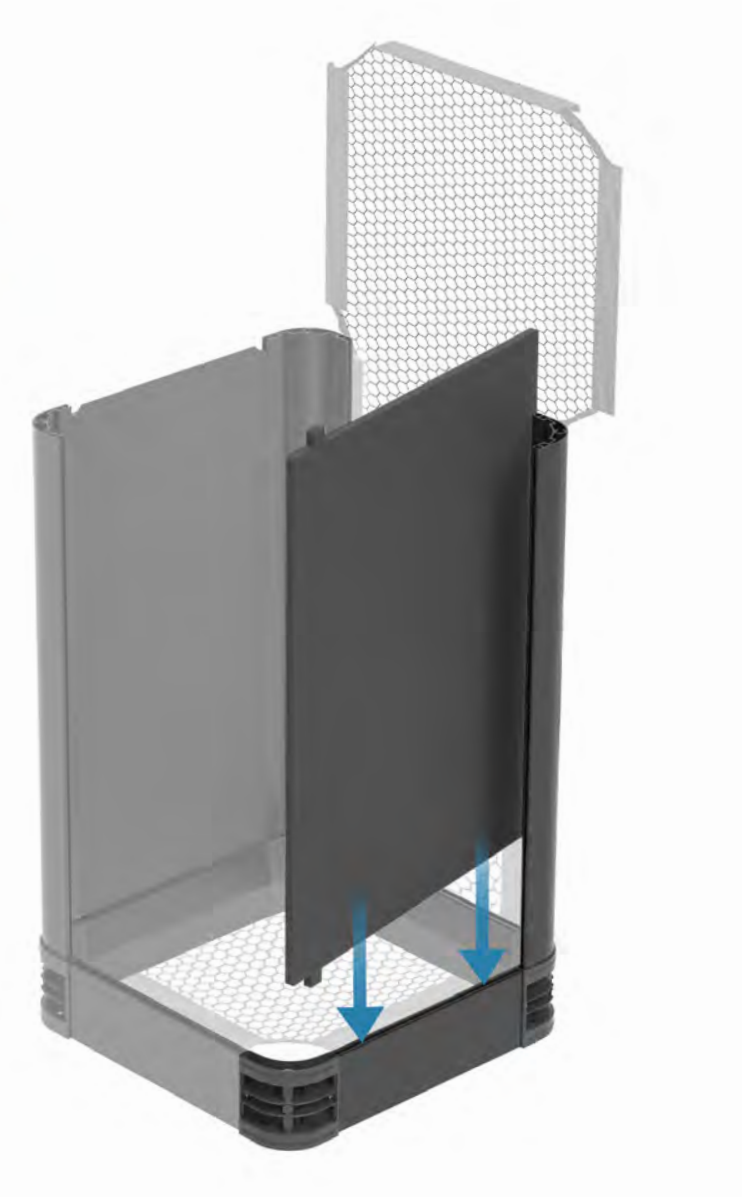
CHAIR × 2

7

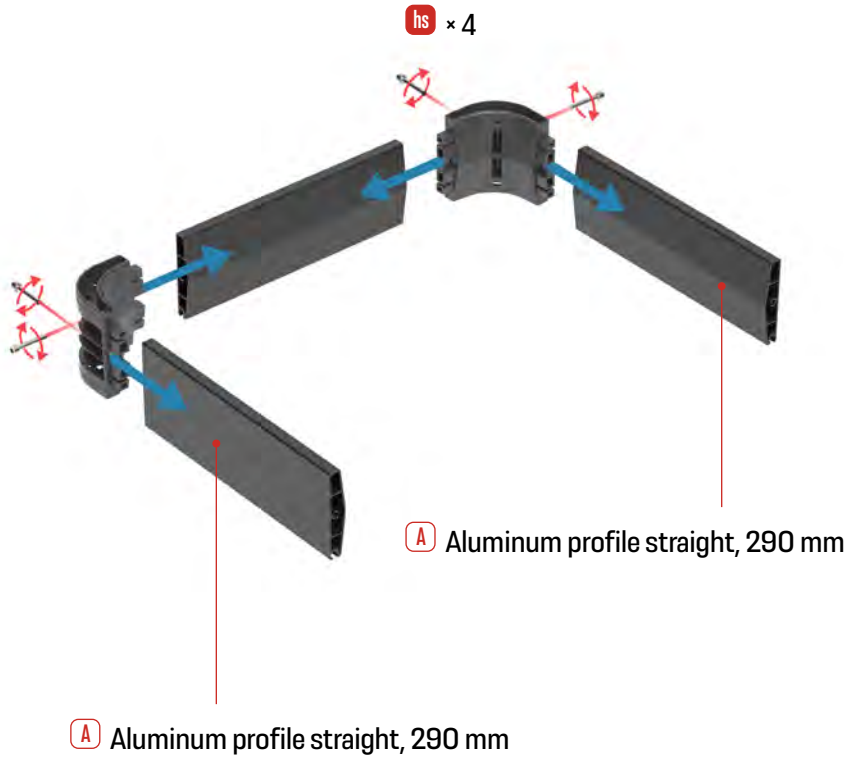


CHAIR × 2

8

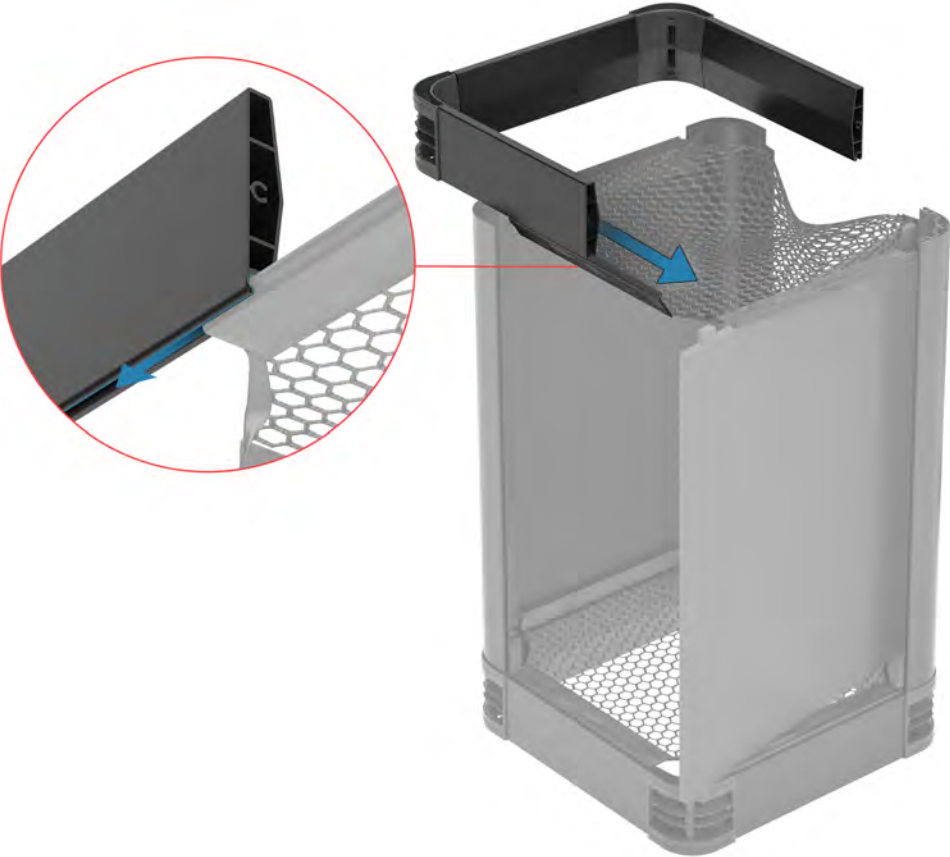


9

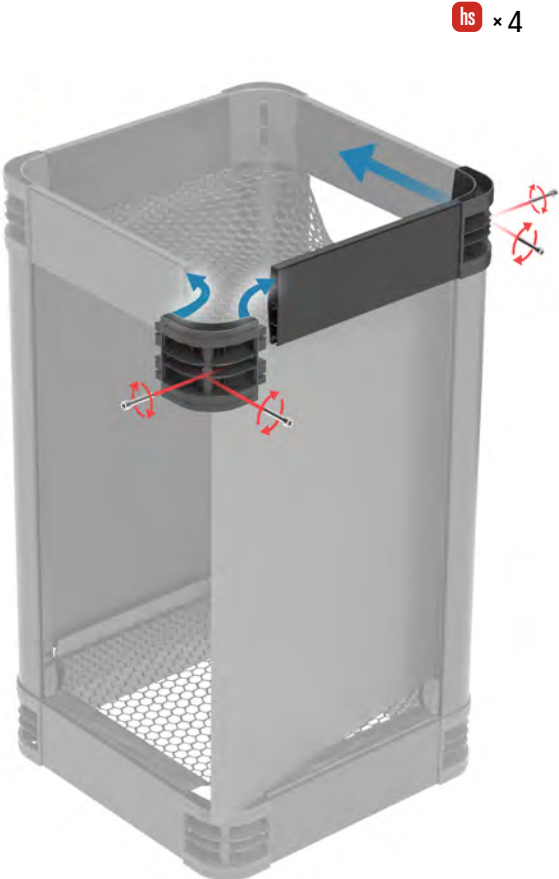


CHAIR × 2

10



11



CHAIR × 2

12



13



CHAIR COMPLETE

14

Repeat steps 1–14
for the second chair



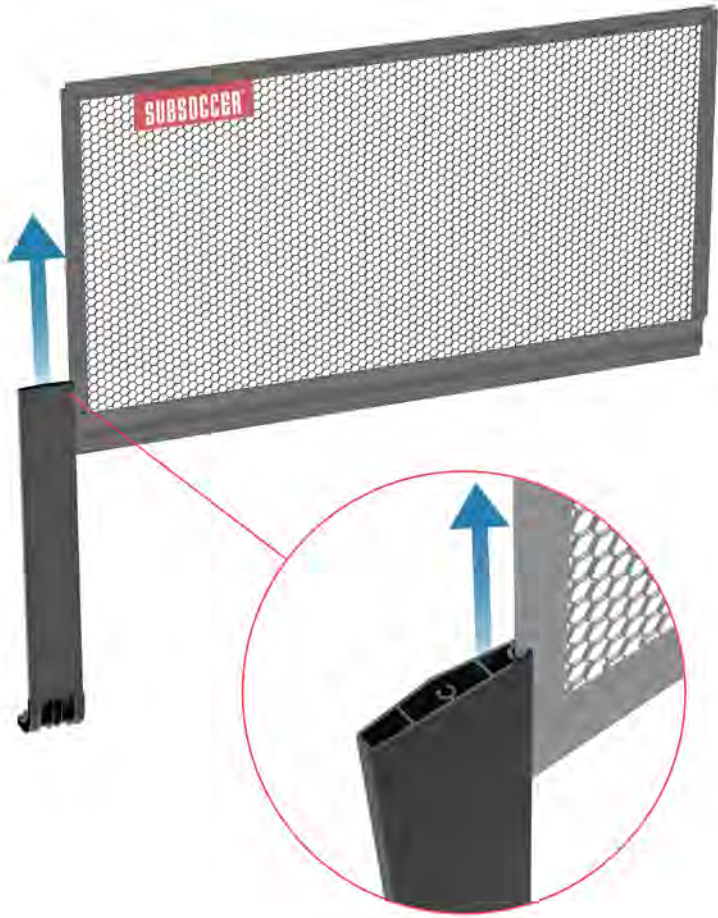
TABLE

1



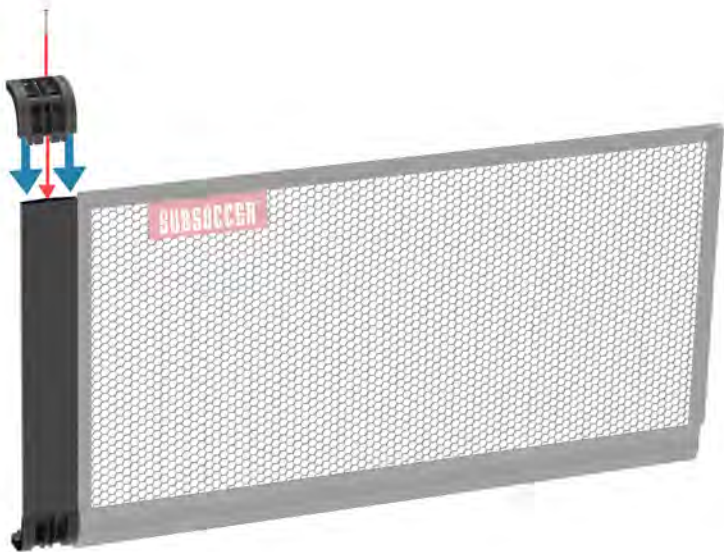
Aluminum profile straight, 570 mm

2

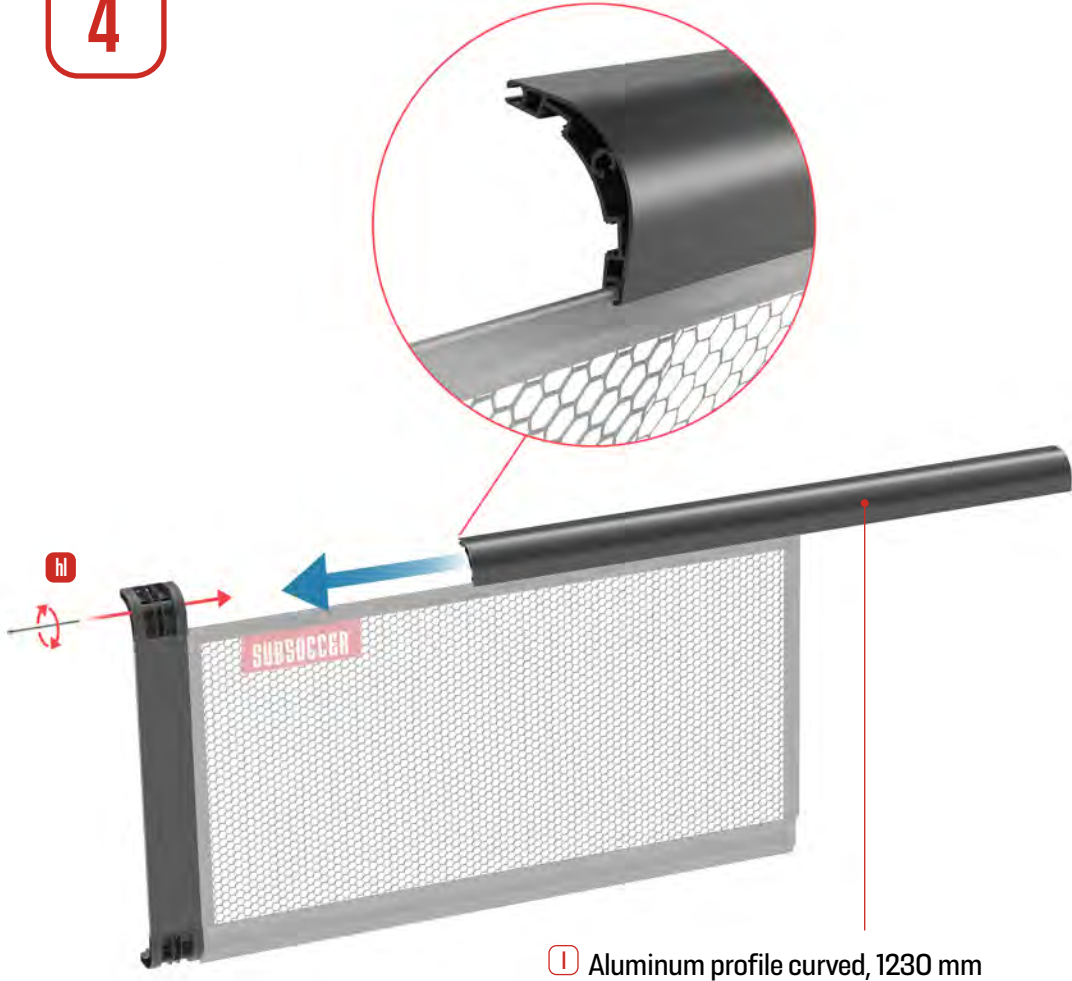


TABLE

3



4



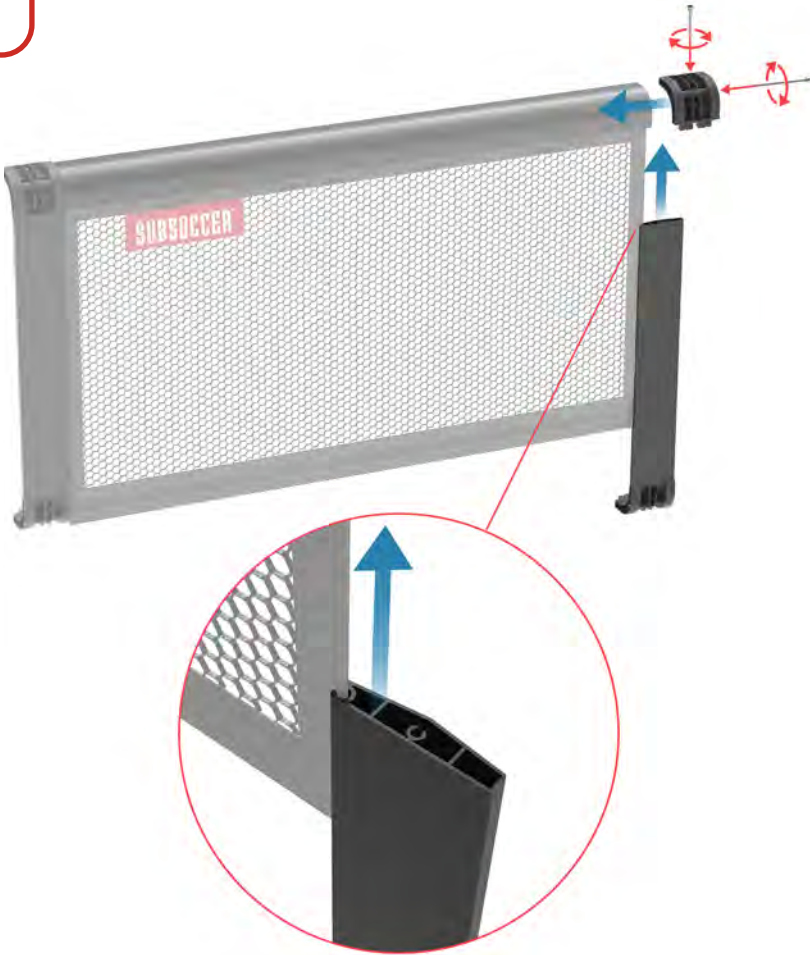
Aluminum profile curved, 1230 mm

TABLE

5

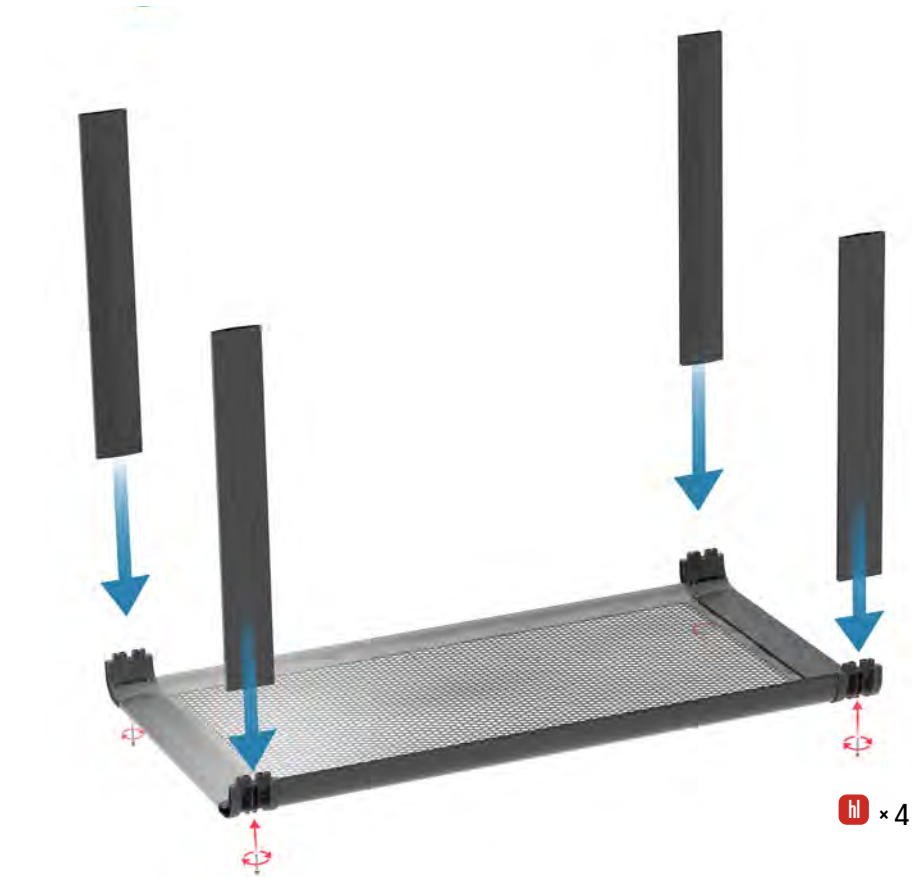


6

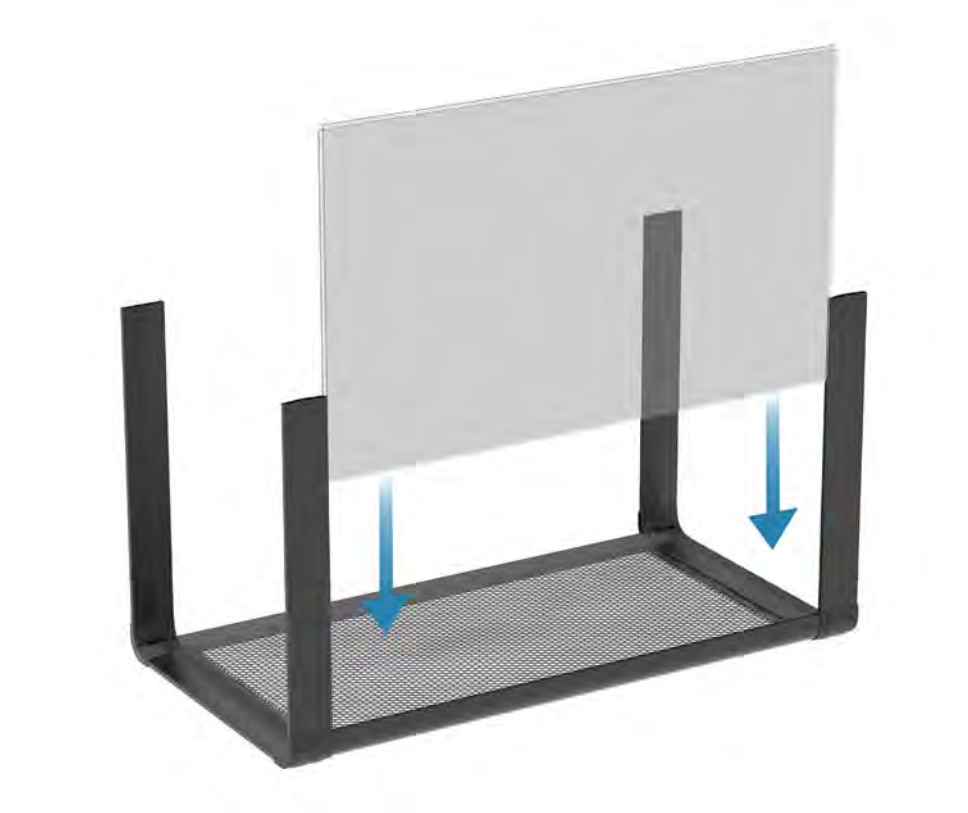


TABLE

7

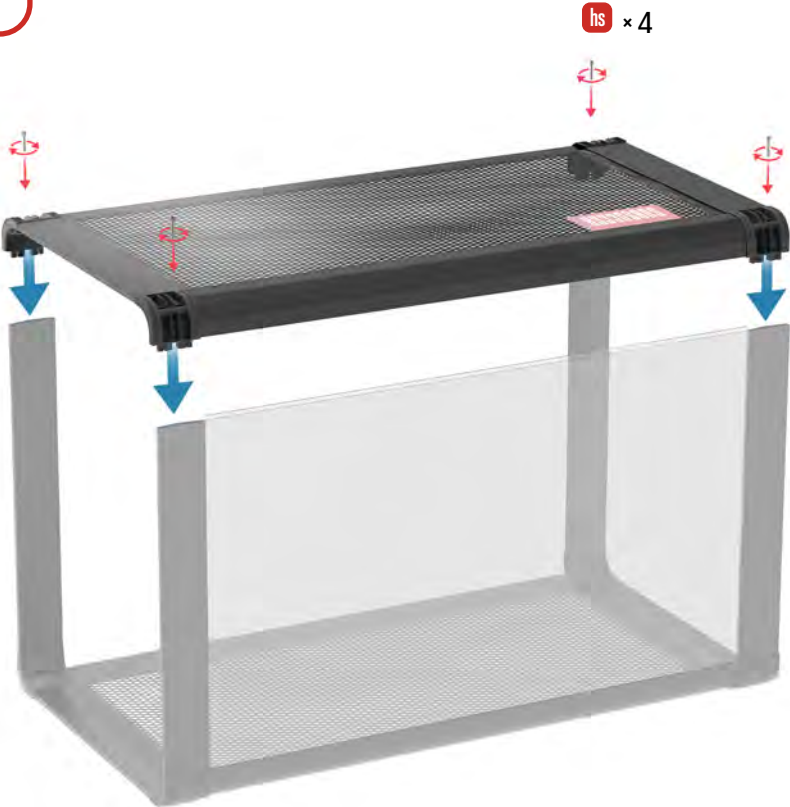


8



TABLE

9



10

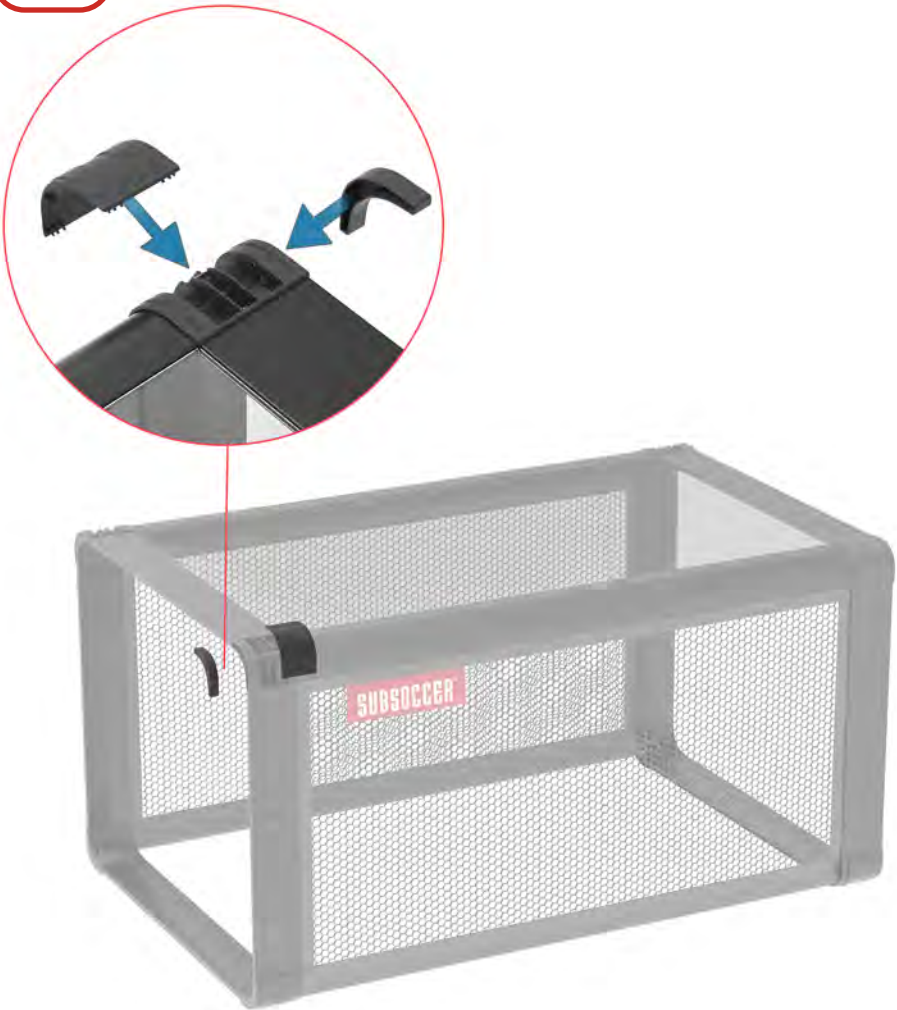
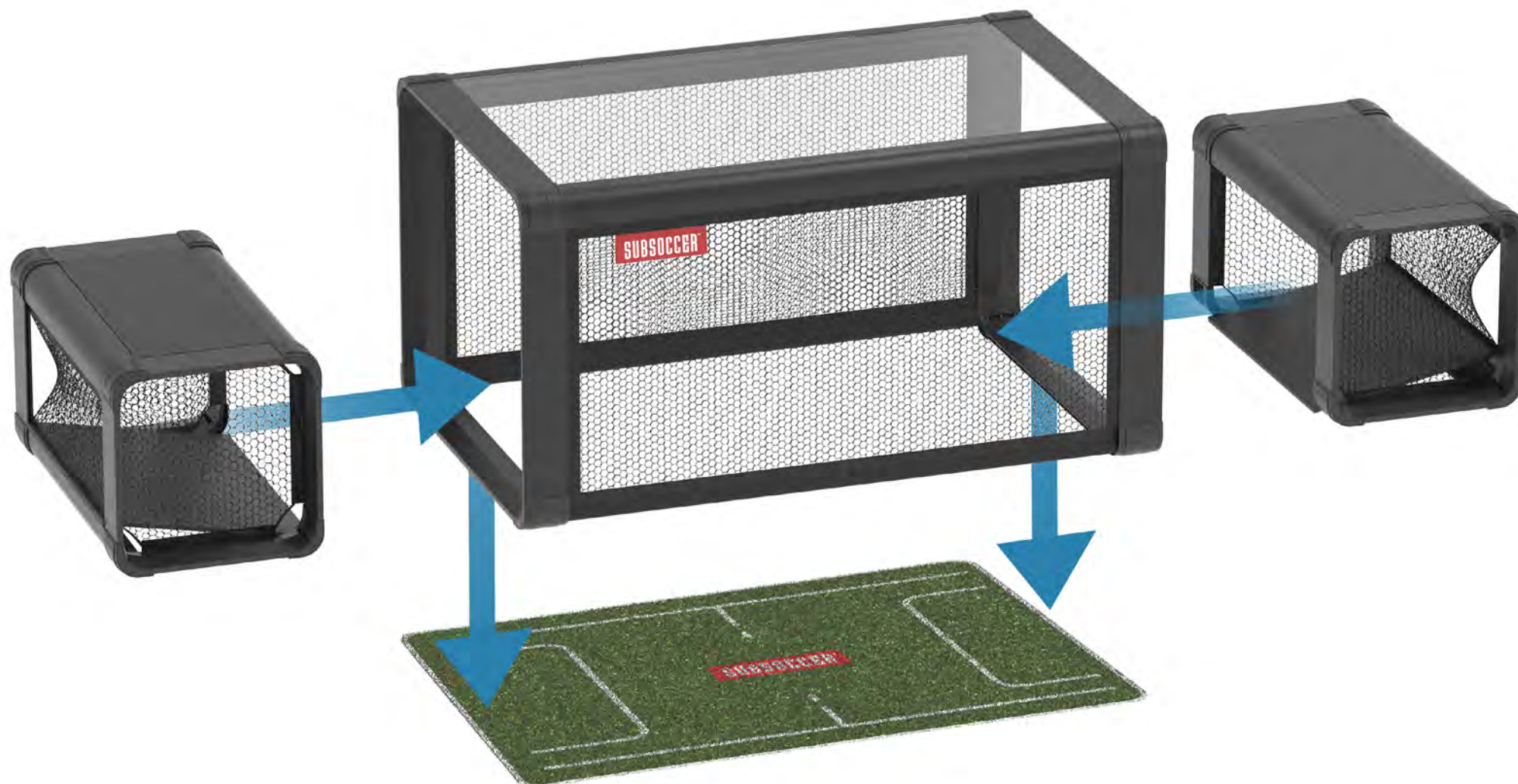


TABLE COMPLETE

11



ASSEMBLY



ASSEMBLY COMPLETE



TIPS FOR ASSEMBLY

Tools

To assemble this Subsoccer all you need is a right sized screwdriver and/ or hexagon allen key. Helpful basic tools are provided with this product, but we recommend to use professional tools if you have access to those.

During periods of non-use

This Subsoccer can be disassembled and stored. Please read the assembly instructions before beginning to assemble the product.

Prior to assembling

This product has to be assembled, positioned and stored by adults or under direct supervision and responsibility of an adult. Assembling has to be carried out by at least two people due to the weight and size of this product. Assemble, use and store this product on a level surface that is strong enough to bear the entire weight of the product and its users.

Assemble the product as shown in the instructions. Do not skip any parts or assemble the product in any other order than described in the instructions.

To prevent any injuries to your hands from pinch points during assembly, please use gloves to protect your hands.

Please refer to the page for part descriptions and numbers. The assembly steps use these descriptions and numbers as reference for your convenience. Make sure that you have all parts listed. If you are missing any parts, please refer to the page for Instructions on how to attain any parts.

PRODUCT CLEANING & CARE

Environment and storing

The game can be used indoors or outdoors, but it is recommended to store the game in a dry and sheltered place. The game contains parts that could be damaged by improper storage or strong weather conditions such as sunlight, rain, sand, snow, etc.

If the game is used outdoors, it is presumed that sand, dust, etc. can cause scratches and stains to the game. If the game gets wet, it is advised to dry it thoroughly before storing.

Smooth surfaces should be cleaned with a cloth, dampened with a mild detergent. Dry with a clean cloth.

Do not expose the product to fire, extreme temperatures or corrosive substances.

These measures help you protect the surface and materials of this product and maintain its lifecycle.

DOUBLES – SUBSOCCER S8

Want to play Subsoccer as a foursome? It is easily done by combining two SUBSOCCER™ S7 games to create SUBSOCCER™ S8.

Remove the side nets and down pipe from one side of the both games. Place the tables open sides and benches side by side.

SUBSOCCER™ S8 game mat to be purchased separately:
www.subsoccer.com





SIT, KICK &
GET HOOKED!

SUBSOCCER

SUBSOCCER™ products are designed in Finland by Subsoccer Ltd.

SUBSOCCER™ is a trademark of Subsoccer Ltd.

SUBSOCCER™ game is PATENTED.

Made in China

Copyright © 2025, Subsoccer Ltd.